

GUTTERCREST

ALUMINIUM

BULLNOSE GUTTERS



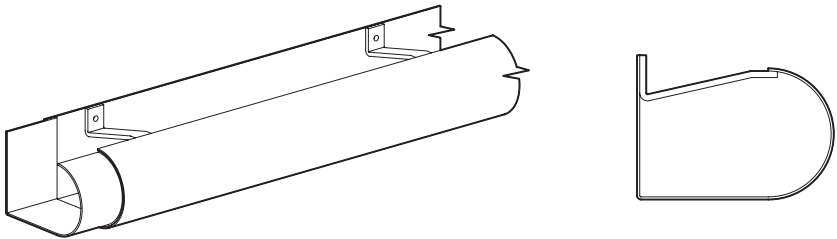
PRICE LIST

PRICE LIST

BULLNOSE GUTTER SYSTEM

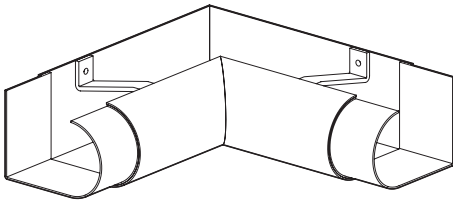
STANDARD GUTTER LENGTHS

Gutter (mm)	150 x 100
3.0mtr	BNG1/1
MILL	117.01
PPC	128.81
1.5mtr	BNG1/2
MILL	95.74
PPC	101.64

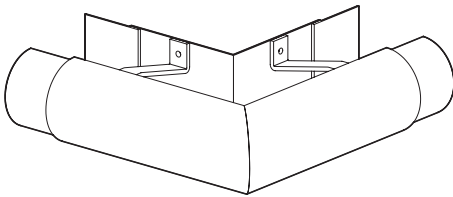


ANGLES INTERNAL & EXTERNAL

Gutter (mm)	150 x 100
90° External	BNG1/3
MILL	73.27
PPC	75.52
90° Internal	BNG1/4
MILL	73.27
PPC	75.52
135° External	BNG1/5
MILL	71.23
PPC	73.12
135° Internal	BNG1/6
MILL	71.23
PPC	73.12
Irregular External	BNG1/7
MILL	98.08
PPC	100.04
Irregular Internal	BNG1/8
MILL	98.08
PPC	100.04



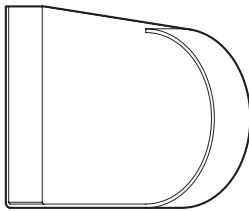
Internal Angle



External Angle

STOP ENDS

Gutter (mm)	150 x 100
Stop End Right Hand	BNG1/10
MILL	10.90
PPC	11.45
Stop End Left Hand	BNG1/11
MILL	10.90
PPC	11.45



Right Hand shown

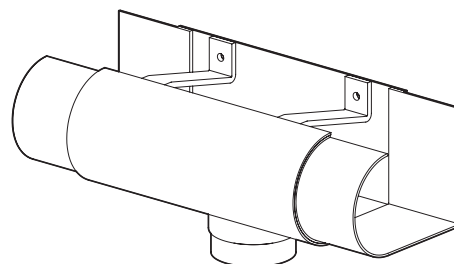
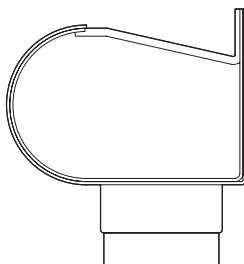
NOTE: THESE ARE INTERNAL STOP ENDS

PRICE LIST

BULLNOSE GUTTER SYSTEM

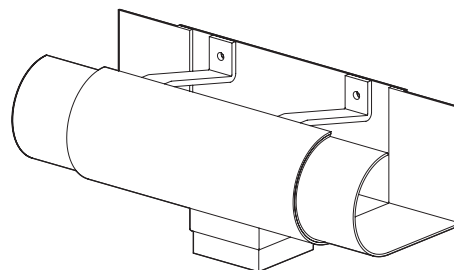
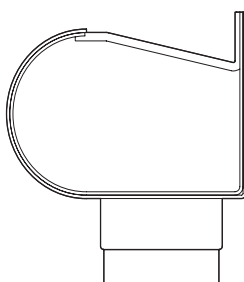
RUNNING OUTLETS - ROUND

Gutter (mm)	150 x 100
63mm Ø	BNG1/13
MILL	66.67
PPC	68.13
75mm Ø	BNG1/14
MILL	67.64
PPC	69.10
100mm Ø	BNG1/15
MILL	70.45
PPC	71.91



RUNNING OUTLETS - SQUARE & RECTANGULAR

Gutter (mm)	150 x 100
75 x 50mm	BNG1/18
MILL	70.84
PPC	72.30
75 x 75mm	BNG1/19
MILL	72.08
PPC	73.54
100 x 75mm	BNG1/20
MILL	73.59
PPC	75.05
100 x 100mm	BNG1/21
MILL	71.86
PPC	73.32



PRICE LIST

FIXINGS & SEALANTS

Code	Qty	Description	Price
GM1	25	Gutter Fixing 38 x 5.5 A2 Stainless Steel	4.44
GM2	100	Gutter Fixing 38 x 5.5 A2 Stainless Steel	13.44
GM3	200	Gutter Fixing 38 x 5.5 A2 Stainless Steel	26.08



GM1 - GM5

Code	Qty	Description	Price
GM201	25	4.8 x 14.7 All Aluminium sealed Rivet	3.29
GM202	100	4.8 x 14.7 All Aluminium sealed Rivet	12.09
GM203	200	4.8 x 14.7 All Aluminium sealed Rivet	22.68



GM201 - GM203

Code	Qty	Description	Price
GM610	25	6.3mm STRUCTURAL Aluminium Rivet	10.67
GM620	100	6.3mm STRUCTURAL Aluminium Rivet	37.92
GM630	200	6.3mm STRUCTURAL Aluminium Rivet	75.84



GM610 - GM620

Code	Qty	Description	Price
GM20	25	Downpipe Fixing 6 x 50 A2 Stainless Steel	9.54
GM21	100	Downpipe Fixing 6 x 50 A2 Stainless Steel	31.84



GM20 - GM21

Code	Qty	Description	Price
GM30	1	380ml Cartridge Silicone Sealant - Grey	10.80
GM32	1	1no 12mtr Reel Butyl Tape 12mm x 3mm	6.33
GM40	1	Touch Up Paint - Colour to match order	23.35
GM50	1	1no Drill Bit 4.8mm	2.02
GM51	1	1no Drill Bit 6.4mm	2.69



GM30



GM32



GM50 - GM60

Code	Qty	Description	Price
GM910	1	Standard Rainwater Rivet Gun	19.52
GM920	1	Professional Rivet Gun - Interchangeable collets for rain-water and structural rivets	111.10



GM910



GM920

PRICE LIST

CARRIAGE CHARGES

GUTTERS, DOWNPIPES & HOPPERS

TOTAL NET ORDER VALUE (EXCLUDING VAT)		PRICE
£0 - £99	BOXED UP TO 10KG	£15 Min Charge
£0 - £99	3M LENGTHS UP TO 10KGS	£30
£100 - £624		£40
£625 - £1249		£55
£1250 PLUS		FREE DELIVERY

Delivery Exclusions Apply:
Please see the Charges
section below

COPING, FASCIAS & SOFFITS

TOTAL NET ORDER VALUE (EXCLUDING VAT)	PRICE
£0 - £150	£40
£151 - £1249	£95
£1250 PLUS	FREE DELIVERY

Delivery Exclusions Apply:
Please see the Charges
section below

CHARGES

With a fleet of Guttercrest vehicles and outside couriers, we deliver all our aluminium products to your local builders merchant or direct to site.

SCOTTISH MAINLAND

Standard carriage charges apply on
Postcode areas: DG, EH, G, KA, KY, TD

ALSO TO INCLUDE: DD1 - DD7, FK1 - FK7, FK9 - FK15,
FK8 STERLING ONLY (Rest of FK8 will be price on application),
KY1 - KY16, PA1 - PA19, PH1 - PH4, PH12 - PH14

All other Scottish Mainland, carriage price on application.

NON MAINLAND

For delivery to Northern Ireland, The Republic of Ireland
and all offshore Islands, carriage Price on application.

EXPORT

Price on application.

Tel: +44 (0)1691 663300

Email: info@guttercrest.co.uk

VAT will be charged at the appropriate rate.

