

# GUTTERCREST

**ALUMINIUM**

**HOPPERS**

**STANDARD & DECORATIVE**



**PRICE LIST**

## PRICE LIST

### STANDARD HOPPERS - ROUND OUTLETS

#### STANDARD HOPPERS IN DIE CAST ALUMINIUM

	63Ø	75Ø	100Ø	125Ø	150Ø
RWH200	RWH200/1	RWH200/2	RWH200/3	RWH200/4	RWH200/5
<b>MILL</b>	<b>49.07</b>	<b>49.07</b>	-	-	-
<b>PPC</b>	<b>52.23</b>	<b>52.23</b>	-	-	-
RWH201	RWH201/1	RWH201/2	RWH201/3	RWH201/4	RWH201/5
<b>MILL</b>	<b>54.73</b>	<b>54.73</b>	<b>54.73</b>	-	-
<b>PPC</b>	<b>58.82</b>	<b>58.82</b>	<b>58.82</b>	-	-
RWH202	RWH202/1	RWH202/2	RWH202/3	RWH202/4	RWH202/5
<b>MILL</b>	<b>85.64</b>	<b>85.64</b>	<b>85.64</b>	<b>98.17</b>	<b>98.17</b>
<b>PPC</b>	<b>89.65</b>	<b>89.65</b>	<b>89.65</b>	<b>102.18</b>	<b>102.18</b>
RWH203	RWH203/1	RWH203/2	RWH203/3	RWH203/4	RWH203/5
<b>MILL</b>	<b>49.58</b>	<b>49.58</b>	<b>49.58</b>	-	-
<b>PPC</b>	<b>53.05</b>	<b>53.05</b>	<b>53.05</b>	-	-
RWH620	RWH620/1	RWH620/2	RWH620/3	RWH620/4	RWH620/5
<b>MILL</b>	<b>46.65</b>	<b>46.65</b>	<b>46.65</b>	<b>59.18</b>	-
<b>PPC</b>	<b>49.51</b>	<b>49.51</b>	<b>49.51</b>	<b>62.04</b>	-
RWH640	RWH640/1	RWH640/2	RWH640/3	RWH640/4	RWH640/5
<b>MILL</b>	<b>79.01</b>	<b>79.01</b>	<b>79.01</b>	<b>91.54</b>	<b>91.54</b>
<b>PPC</b>	<b>84.52</b>	<b>84.52</b>	<b>84.52</b>	<b>97.05</b>	<b>97.05</b>
RWH660	RWH660/1	RWH660/2	RWH660/3	RWH660/4	RWH660/5
<b>MILL</b>	<b>160.40</b>	<b>160.40</b>	<b>160.40</b>	<b>172.93</b>	<b>172.93</b>
<b>PPC</b>	<b>169.19</b>	<b>169.19</b>	<b>169.19</b>	<b>181.72</b>	<b>181.72</b>
RWH209	RWH720/1	RWH720/2	RWH720/3	RWH720/4	RWH720/5
<b>MILL</b>	<b>77.23</b>	<b>77.23</b>	<b>77.23</b>	<b>89.76</b>	-
<b>PPC</b>	<b>81.18</b>	<b>81.18</b>	<b>81.18</b>	<b>93.71</b>	-
RWH209-1	RWH721/1	RWH721/2	RWH721/3	RWH721/4	RWH721/5
<b>MILL</b>	<b>77.23</b>	<b>77.23</b>	<b>77.23</b>	<b>89.76</b>	-
<b>PPC</b>	<b>81.18</b>	<b>81.18</b>	<b>81.18</b>	<b>93.71</b>	-



FLUTED SMALL  
RWH200

FLUTED MEDIUM  
RWH201

FLUTED LARGE  
RWH202



CONICAL  
RWH203



RECTANGULAR  
RWH620

LARGE RECTANGULAR  
RWH640

EXTRA LARGE RECTANGULAR  
RWH660



ORNATE PLAIN  
SMALL RWH720



ORNATE WITH MOTIF  
RWH721

**NEW** LARGE RWH740

**FOR CUSTOM MOTIFS,  
NUMERALS OR NAME PLATES  
PLEASE ASK**

## PRICE LIST

### STANDARD HOPPERS - SQUARE OUTLETS

#### STANDARD HOPPERS IN DIE CAST ALUMINIUM

	75 x 50	75 x 75	100 x 75	100 x 100	150 x 100	150 x 150
RWH200	RWH200/32	RWH200/33	RWH200/43	RWH200/44	RWH200/64	RWH200/66
MILL	-	-	-	-	-	-
PPC	-	-	-	-	-	-
RWH201	RWH201/32	RWH201/33	RWH201/43	RWH201/44	RWH201/64	RWH201/66
MILL	54.73	54.73	-	-	-	-
PPC	58.82	58.82	-	-	-	-
RWH202	RWH202/32	RWH202/33	RWH202/43	RWH202/44	RWH202/64	RWH202/66
MILL	85.64	85.64	85.64	85.64	98.17	98.17
PPC	89.65	89.65	89.65	89.65	102.18	102.18
RWH203	RWH203/32	RWH203/33	RWH203/43	RWH203/44	RWH203/64	RWH203/66
MILL	49.58	49.58	49.58	-	-	-
PPC	53.05	53.05	53.05	-	-	-
RWH620	RWH620/32	RWH620/33	RWH620/43	RWH620/44	RWH620/64	RWH620/66
MILL	46.65	46.65	46.65	46.65	59.18	-
PPC	49.51	49.51	49.51	49.51	62.04	-
RWH640	RWH640/32	RWH640/33	RWH640/43	RWH640/44	RWH640/64	RWH640/66
MILL	79.01	79.01	79.01	79.01	91.54	91.54
PPC	84.52	84.52	84.52	84.52	97.05	97.05
RWH660	RWH660/32	RWH660/33	RWH660/43	RWH660/44	RWH660/64	RWH660/66
MILL	160.40	160.40	160.40	160.40	172.93	172.93
PPC	169.19	169.19	169.19	169.19	181.72	181.72
RWH720	RWH720/32	RWH720/33	RWH720/43	RWH720/44	RWH720/64	RWH720/66
MILL	77.23	77.23	77.23	77.23	89.76	-
PPC	81.18	81.18	81.18	81.18	93.71	-
RWH209-1	RWH721/32	RWH721/33	RWH721/43	RWH721/44	RWH721/64	RWH721/66
MILL	77.23	77.23	77.23	77.23	89.76	-
PPC	81.18	81.18	81.18	81.18	93.71	-

FOR CUSTOM  
MOTIFS,  
NUMERALS OR  
NAME PLATES  
PLEASE ASK



FLUTED SMALL  
RWH200

FLUTED MEDIUM  
RWH201

FLUTED LARGE  
RWH202



CONICAL  
RWH203



RECTANGULAR  
RWH620

LARGE RECTANGULAR  
RWH640

EXTRA LARGE RECTANGULAR  
RWH660



ORNATE PLAIN

SMALL RWH720

NEW LARGE RWH740



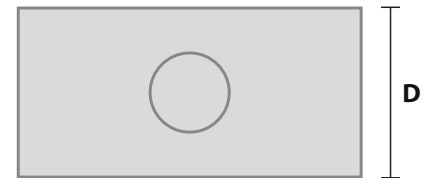
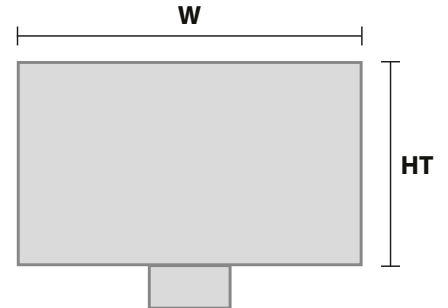
ORNATE  
WITH MOTIF  
RWH721

## PRICE LIST

### STANDARD HOPPERS

#### STANDARD HOPPERS IN DIE CAST ALUMINIUM

CODE	H/T	W	D	MAX Ø	MAX □
RWH200	195	265	205	75	N/A
RWH201	230	295	230	100	75 X 75
RWH202	300	430	325	200	150 X 150
RWH203	200	265	220	100	100 X 75
RWH209	180	400	190	125	150 X 100
RWH209-1	180	400	190	125	150 X 100
RWH620	185	270	180	100	150 X 100
RWH640	225	440	240	150	150 X 150
RWH660	275	600	275	200	150 X 150



FOR CUSTOM MOTIFS,  
NUMERALS OR NAME PLATES  
PLEASE ASK



FLUTED SMALL  
RWH200



CONICAL  
RWH203

FLUTED MEDIUM  
RWH201

FLUTED LARGE  
RWH202



RECTANGULAR  
RWH620



ORNATE PLAIN  
RWH209



ORNATE WITH MOTIF  
RWH209-1

LARGE RECTANGULAR  
RWH640

EXTRA LARGE RECTANGULAR  
RWH660

## PRICE LIST

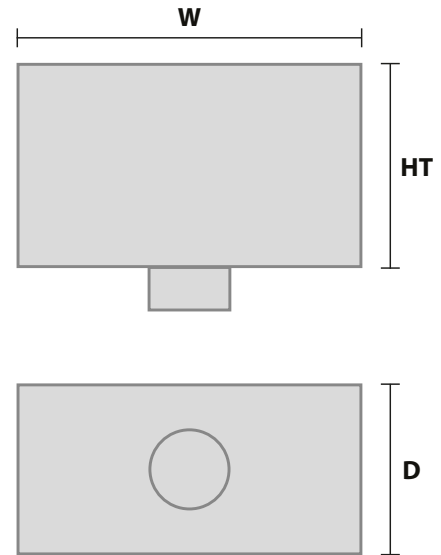
### DECORATIVE DIE CAST ALUMINIUM HOPPERS

A RANGE OF CAST ALUMINIUM HOPPER HEADS

SPECIALS CAN BE MANUFACTURED TO REPLICATE ORIGINAL OR NEW DESIGNS

CODE	H/T	W	D	MAX Ø	MAX □
RWH210	480	460	210	100	75 X 75
RWH211	460	435	200	75	75 X 75
RWH212	440	410	250	100	N/A
RWH213	390	450	190	100	75 X 75
RWH214	145	420	145	100	100 X 75
RWH215	260	300	170	75	100 X 75

FOR PRICES ON DECORATIVE HOPPERS  
PLEASE ASK



RWH210



RWH211



RWH212



RWH213



RWH214



RWH215

## PRICE LIST

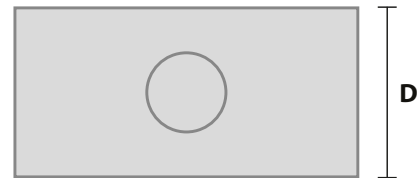
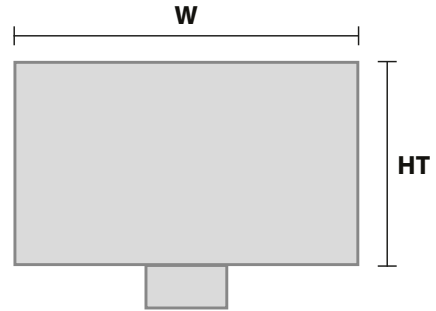
### DECORATIVE DIE CAST ALUMINIUM HOPPERS

A RANGE OF CAST ALUMINIUM HOPPER HEADS

SPECIALS CAN BE MANUFACTURED TO REPLICATE ORIGINAL OR NEW DESIGNS

CODE	H/T	W	D	MAX Ø	MAX □
RWH216	400	385	240	100	150 X 100
RWH217	375	445	175	75	75 X 75
RWH218	320	490	285	100	100 X 75
RWH219	380	380	260	75	100 X 75
RWH220	350	360	165	75	75 X 75
RWH221	460	440	270	75	100 X 75

FOR PRICES ON DECORATIVE HOPPERS  
PLEASE ASK



RWH216



RWH217



RWH218



RWH219



RWH220



RWH221

## PRICE LIST

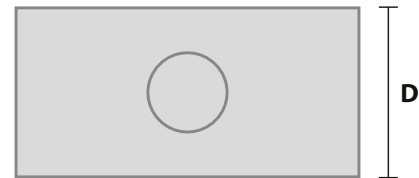
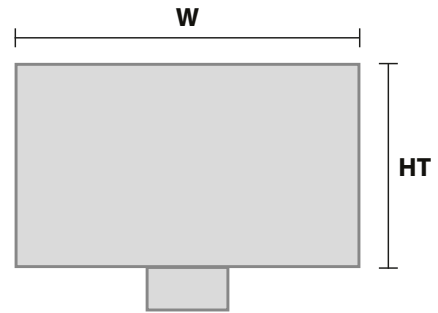
### DECORATIVE DIE CAST ALUMINIUM HOPPERS

A RANGE OF CAST ALUMINIUM HOPPER HEADS

SPECIALS CAN BE MANUFACTURED TO REPLICATE ORIGINAL OR NEW DESIGNS

CODE	H/T	W	D	MAX Ø	MAX □
RWH222	380	480	215	100	100 X 100
RWH223	130	310	165	100	100 X 75
RWH224	330	450	265	100	100 X 100
RWH225	330	450	265	100	75 X 75
RWH226	190	495	270	150	150 X 150
RWH227	350	385	170	100	150 X 100

FOR PRICES ON DECORATIVE HOPPERS  
PLEASE ASK



RWH222



RWH223



RWH224



RWH225



RWH226



RWH227

## PRICE LIST

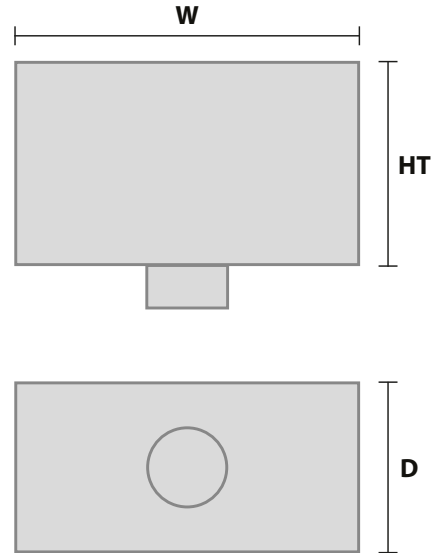
### DECORATIVE DIE CAST ALUMINIUM HOPPERS

A RANGE OF CAST ALUMINIUM HOPPER HEADS

SPECIALS CAN BE MANUFACTURED TO REPLICATE ORIGINAL OR NEW DESIGNS

CODE	H/T	W	D	MAX Ø	MAX □
RWH228	335	425	165	125	150 X 100
RWH229	425	390	230	125	100 X 100
RWH230	290	430	260	100	75 X 75
RWH231	560	290	205	100	100 X 100
RWH232	645	315	200	100	150 X 100
RWH233	260	345	165	75	75 X 75

FOR PRICES ON DECORATIVE HOPPERS  
PLEASE ASK



RWH228



RWH229



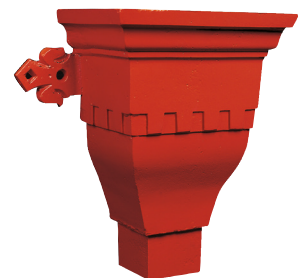
RWH230



RWH231



RWH232



RWH233

## PRICE LIST

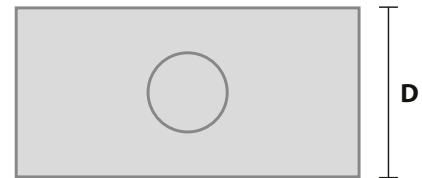
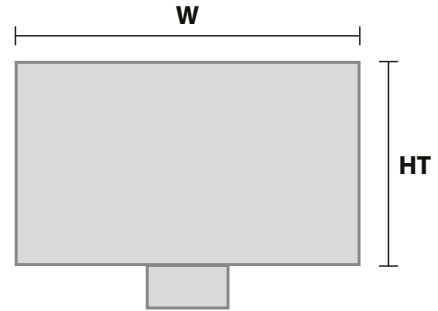
### DECORATIVE DIE CAST ALUMINIUM HOPPERS

A RANGE OF CAST ALUMINIUM HOPPER HEADS

SPECIALS CAN BE MANUFACTURED TO REPLICATE ORIGINAL OR NEW DESIGNS

CODE	H/T	W	D	MAX Ø	MAX □
RWH234	235	220	170	75	75 X 75
RWH235	305	350	215	100	75 X 75
RWH236	290	270	200	75	100 X 75
RWH237	380	445	180	100	100 X 100
RWH238	480	230	100	100 X 100	

FOR PRICES ON DECORATIVE HOPPERS  
PLEASE ASK



RWH234



RWH235



RWH236



RWH237



RWH238

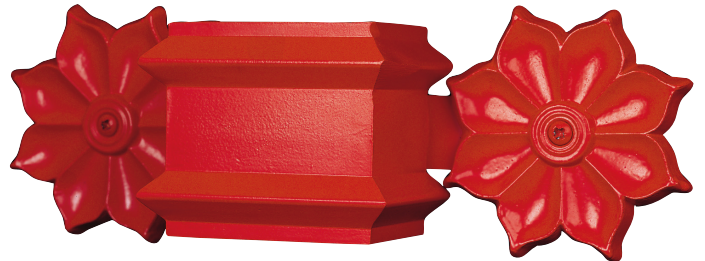
## PRICE LIST

### FEATURE DOWNPIPE BRACKETS

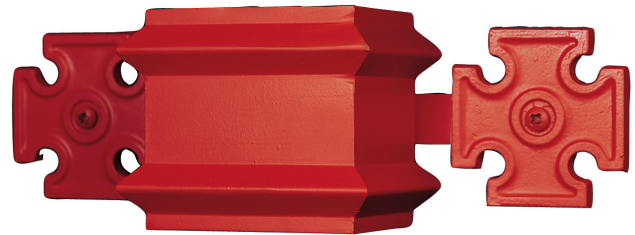
A RANGE OF CAST ALUMINIUM FEATURE BRACKETS WHICH COMPLEMENT OUR GEORGIAN & TRADITIONAL DOWNPIPES



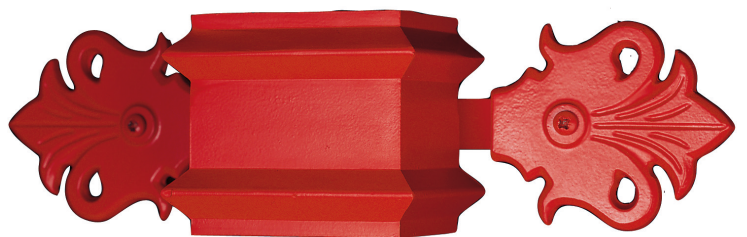
RAMSHORN



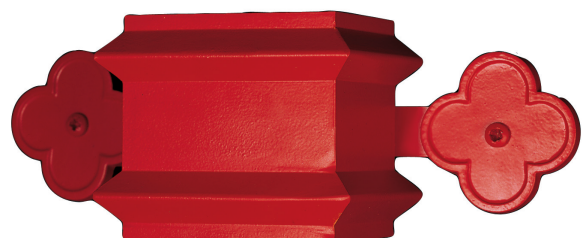
FLORAL



MALTESE CROSS



FLEUR DE LYS



CLOVER LEAF

FOR PRICES ON FEATURE DOWNPIPE BRACKETS PLEASE ASK

## PRICE LIST

### FIXINGS & SEALANTS

Code	Qty	Description	Price
GM1	25	Gutter Fixing 38 x 5.5 A2 Stainless Steel	4.56
GM2	100	Gutter Fixing 38 x 5.5 A2 Stainless Steel	13.86
GM3	200	Gutter Fixing 38 x 5.5 A2 Stainless Steel	26.90



GM1 - GM5

Code	Qty	Description	Price
GM201	25	4.8 x 14.7 All Aluminium sealed Rivet	3.38
GM202	100	4.8 x 14.7 All Aluminium sealed Rivet	12.46
GM203	200	4.8 x 14.7 All Aluminium sealed Rivet	23.38



GM201 - GM203

Code	Qty	Description	Price
GM610	25	6.3mm STRUCTURAL Aluminium Rivet	10.97
GM620	100	6.3mm STRUCTURAL Aluminium Rivet	39.11
GM630	200	6.3mm STRUCTURAL Aluminium Rivet	78.21



GM610 - GM620

Code	Qty	Description	Price
GM20	25	Downpipe Fixing 6 x 50 A2 Stainless Steel	9.81
GM21	100	Downpipe Fixing 6 x 50 A2 Stainless Steel	32.84



GM20 - GM21

Code	Qty	Description	Price
GM30	1	380ml Cartridge Silicone Sealant - Grey	11.00
GM32	1	1no 12mtr Reel Butyl Tape 12mm x 3mm	6.56
GM40	1	Touch Up Paint - Colour to match order	23.98
GM50	1	1no Drill Bit 4.8mm	2.06
GM51	1	1no Drill Bit 6.4mm	2.74



GM30



GM32



GM50 - GM60

Code	Qty	Description	Price
GM910	1	Standard Rainwater Rivet Gun	20.13
GM920	1	Professional Rivet Gun - Interchangeable collets for rain-water and structural rivets	115.19



GM910



GM920

## PRICE LIST

### CARRIAGE CHARGES

#### GUTTERS, DOWNPIPES & HOPPERS

TOTAL NET ORDER VALUE (EXCLUDING VAT)		PRICE
£0 - £99	BOXED UP TO 10KG	£15 Min Charge
£0 - £99	3M LENGTHS UP TO 10KGS	£30
£100 - £624		£40
£625 - £1249		£55
£1250 PLUS		FREE DELIVERY

Delivery Exclusions Apply:  
Please see the Charges  
section below

#### COPING, FASCIAS & SOFFITS

TOTAL NET ORDER VALUE (EXCLUDING VAT)	PRICE
£0 - £150	£40
£151 - £1249	£95
£1250 PLUS	FREE DELIVERY

Delivery Exclusions Apply:  
Please see the Charges  
section below

#### CHARGES

With a fleet of Guttercrest vehicles and outside couriers, we deliver all our aluminium products to your local builders merchant or direct to site.

##### SCOTTISH MAINLAND

Standard carriage charges apply on  
Postcode areas: DG, EH, G, KA, KY, TD

ALSO TO INCLUDE: DD1 - DD7, FK1 - FK7, FK9 - FK15,  
FK8 STERLING ONLY (Rest of FK8 will be price on application),  
KY1 - KY16, PA1 - PA19, PH1 - PH4, PH12 - PH14

All other Scottish Mainland, carriage price on application.

##### NON MAINLAND

For delivery to Northern Ireland, The Republic of Ireland  
and all offshore Islands, carriage Price on application.

##### EXPORT

Price on application.

Tel: +44 (0)1691 663300

Email: [info@guttercrest.co.uk](mailto:info@guttercrest.co.uk)

VAT will be charged at the appropriate rate.

