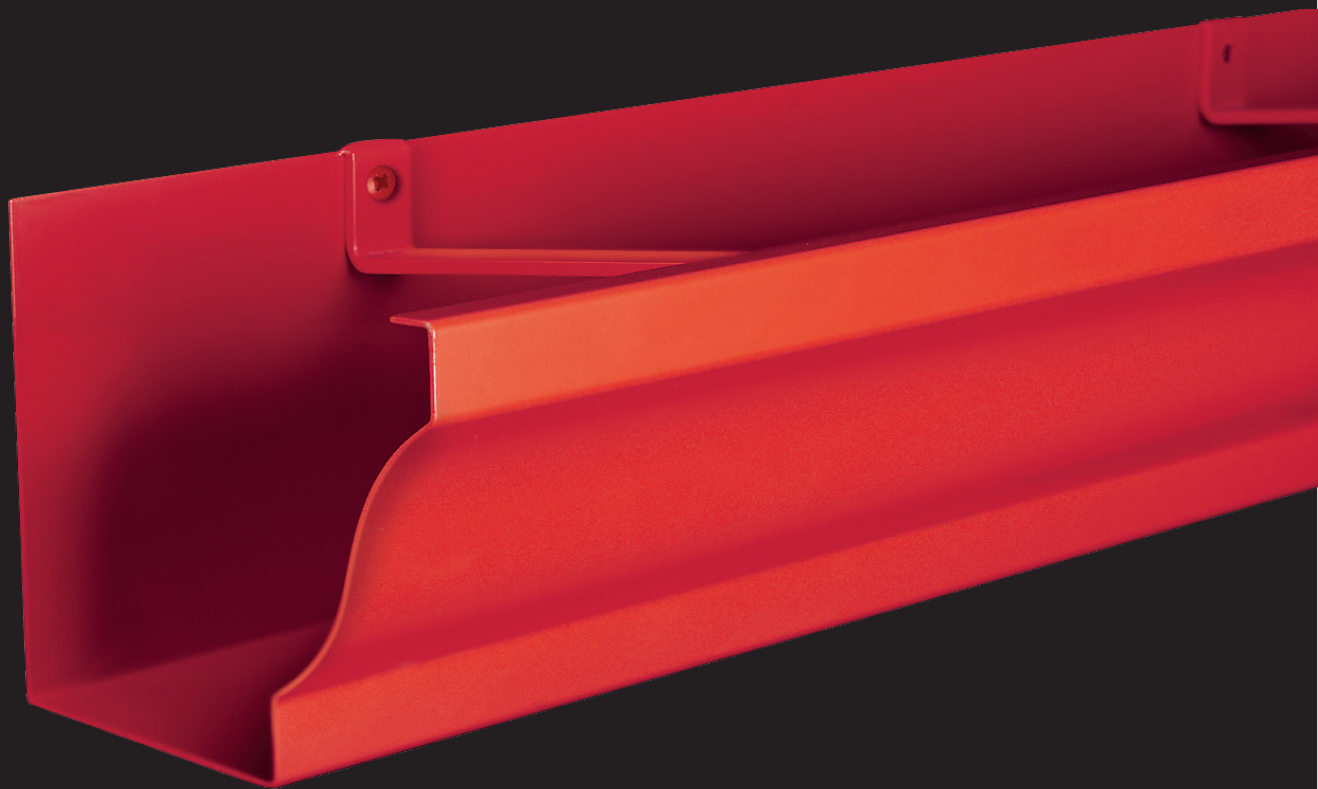


Moulded Ogee Gutter System

(Type 46) Large Sizes

Pressed aluminium Moulded Ogee gutters formed with true curves to front face. These can be made to standard or non-standard sizes, the gutters have fixed internal buttstraps and fixed cross braces which include holes for direct back fixing.

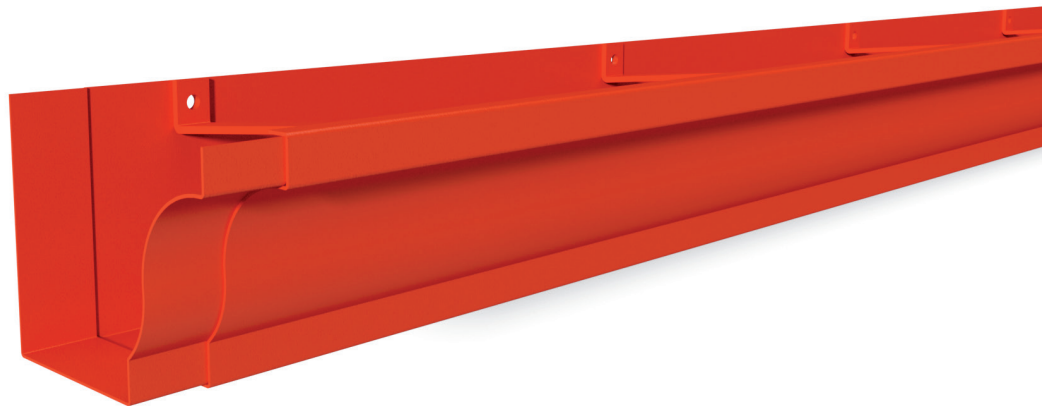
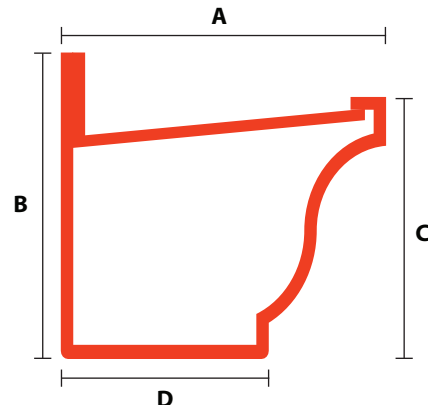


MOULDED OGEE GUTTERING SYSTEM *(large sizes)*

GUTTER LENGTHS

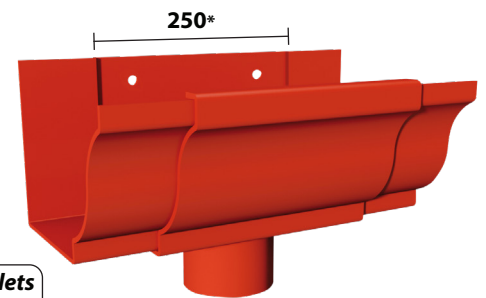
GUTTER (mm)	3m	1.5m	A (mm)	B (mm)	C (mm)	D (mm)	MATERIAL THICKNESS
175 x 125	MOG4/1	MOG4/2	175	135	125	115	2
200 x 150	MOG5/1	MOG5/2	200	160	150	135	2
300 x 200	MOG6/1	MOG6/2	300	220	200	200	2

Wider or deeper gutters manufactured to size required



OUTLETS

GUTTER (mm)	ROUND				
	63 Ø	75 Ø	100 Ø	125 Ø	150 Ø
175 x 125	MOG4/13*	MOG4/14*	MOG4/15*	MOG4/16	MOG4/17
200 x 150	MOG5/13*	MOG5/14*	MOG5/15*	MOG5/16*	MOG5/17
300 x 200	MOG6/13*	MOG6/14*	MOG6/15*	MOG6/16*	MOG6/17*

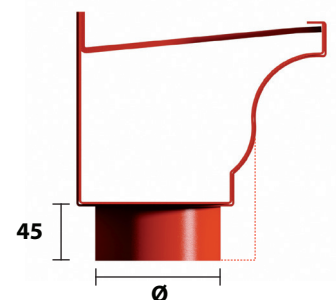


** 300 for outlets over 100*

GUTTER (mm)	SQUARE AND RECTANGULAR					
	75 x 50	75 x 75	100 x 75	100 x 100	150 x 100	150 x 150
175 x 125	MOG4/18*	MOG4/19*	MOG4/20*	MOG4/21*	MOG4/22	MOG4/23
200 x 150	MOG5/18*	MOG5/19*	MOG5/20*	MOG5/21*	MOG5/22*	MOG5/23
300 x 200	MOG6/18*	MOG6/19*	MOG6/20*	MOG6/21*	MOG6/22*	MOG6/23*



Sleeve Outlet



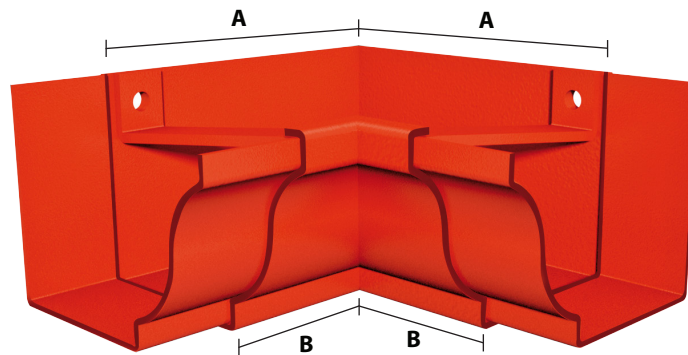
** Indicates a sleeve outlet can be used in place of running outlets giving increased flexibility and cost efficiency.*

MOULDED OGEE GUTTERING SYSTEM *(large sizes)*

ANGLES

90° EXTERNAL				90° INTERNAL			135° EXTERNAL			135° INTERNAL		
GUTTER (mm)	90°	A (mm)	B (mm)	90°	A (mm)	B (mm)	135°	A (mm)	B (mm)	135°	A (mm)	B (mm)
175 x 125	MOG4/3	150	325	MOG4/4	325	150	MOG4/5	150	220	MOG4/6	220	150
200 x 150	MOG5/3	150	350	MOG5/4	350	150	MOG5/5	150	230	MOG5/6	230	150
300 x 200	MOG6/3	150	450	MOG6/4	450	150	MOG6/5	150	265	MOG6/6	265	150

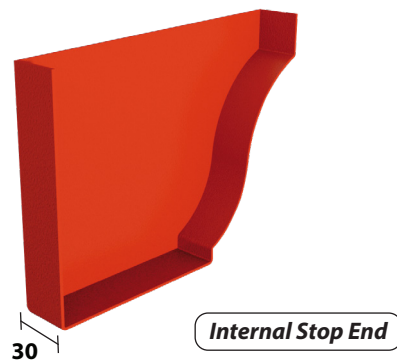
IRREGULAR ANGLE		
GUTTER (mm)	EXTERNAL	INTERNAL
175 x 125	MOG4/7	MOG4/8
200 x 150	MOG5/7	MOG5/8
300 x 200	MOG6/7	MOG6/8



When ordering an irregular angle, state ref no. and actual fascia angle & note that A+B lengths vary subject to angle.

STOPENDS

GUTTER (mm)	R/H STOPEND	L/H STOPEND
175 x 125	MOG4/10	MOG4/11
200 x 150	MOG5/10	MOG5/11
300 x 200	MOG6/10	MOG6/11



GUTTER BRACKETS

RAFTER & MORTAR BRACKETS

When it is not possible to fix guttering directly to the fascia, we can offer these alternative brackets.

HALF ROUND GUTTER BRACKETS

GUTTER (mm)	SIDE RAFTER	TOP RAFTER*	MORTAR BRACKET
100	HR1/29	HR1/30	HR1/31
115	HR2/29	HR2/30	HR2/31
130	HR3/29	HR3/30	HR3/31
150	HR4/29	HR4/30	HR4/31

BEADED DEEP FLOW GUTTER BRACKETS

GUTTER (mm)	SIDE RAFTER	TOP RAFTER*	MORTAR BRACKET
100	BDF1/29	BDF1/30	BDF1/31
125	BDF2/29	BDF2/30	BDF2/31
150	BDF3/29	BDF3/30	BDF3/31

MOULDED OGEE GUTTER (SMALL) BRACKETS

GUTTER (mm)	SIDE RAFTER	TOP RAFTER*	MORTAR BRACKET
100 x 75	MOG1/29	MOG1/30	MOG1/31
125 x 100	MOG2/29	MOG2/30	MOG2/31
150 x 100	MOG3/29	MOG3/30	MOG3/31

MOULDED OGEE GUTTER (LARGE) SIZES

We recommend that gutters of this size should be directly fixed & not bracketed.

VICTORIAN OGEE GUTTER BRACKETS

GUTTER (mm)	SIDE RAFTER	TOP RAFTER*	MORTAR BRACKET
110	VOG1/29	VOG1/30	VOG1/31
120	VOG2/29	VOG2/30	VOG2/31
130	VOG3/29	VOG3/30	VOG3/31
160	VOG4/29	VOG4/30	VOG4/31

BOX GUTTER (SMALL) BRACKETS

GUTTER (mm)	SIDE RAFTER	TOP RAFTER*	MORTAR BRACKET
100 x 75	BX1/29	BX1/30	BX1/31
100 x 100	BX2/29	BX2/30	BX2/31
125 x 100	BX3/29	BX3/30	BX3/31
150 x 100	BX4/29	BX4/30	BX4/31

BOX GUTTER (LARGE) SIZES

We recommend that gutters of this size should be directly fixed & not bracketed.

SHAPED BOX GUTTER BRACKETS

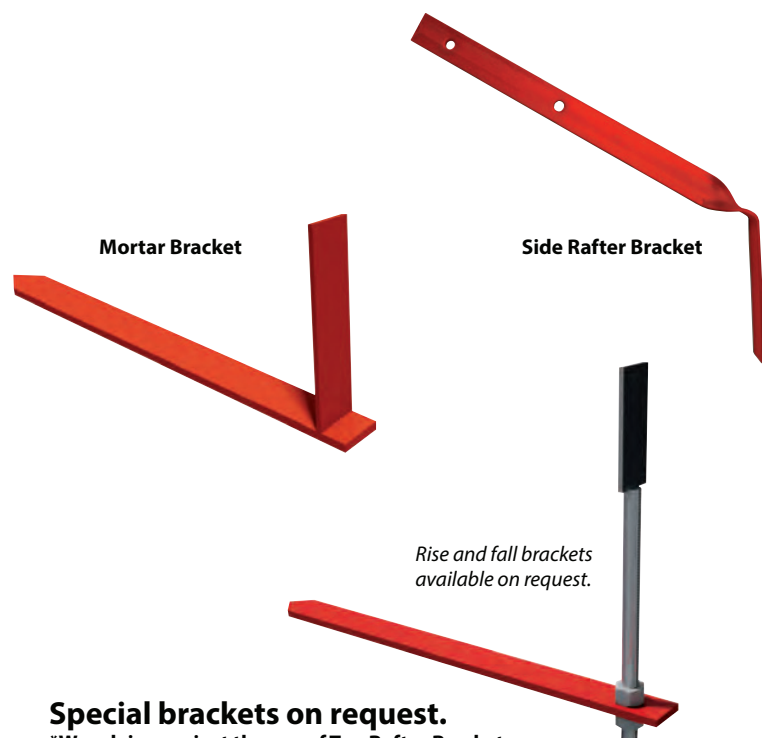
GUTTER (mm)	SIDE RAFTER	TOP RAFTER*	MORTAR BRACKET
100 x 75	SBX1/29	SBX1/30	SBX1/31
100 x 100	SBX2/29	SBX2/30	SBX2/31
125 x 100	SBX3/29	SBX3/30	SBX3/31
150 x 100	SBX4/29	SBX4/30	SBX4/31

RAKED BOX GUTTER BRACKETS

GUTTER (mm)	SIDE RAFTER	TOP RAFTER*	MORTAR BRACKET
100 x 75	RBX1/29	RBX1/30	RBX1/31
100 x 100	RBX2/29	RBX2/30	RBX2/31
125 x 100	RBX3/29	RBX3/30	RBX3/31
150 x 100	RBX4/29	RBX4/30	RBX4/31

BULLNOSE GUTTER BRACKETS

GUTTER (mm)	SIDE RAFTER	TOP RAFTER*	MORTAR BRACKET
150 x 100	BNG1/29	BNG1/30	BNG1/31



Special brackets on request.

*We advise against the use of Top Rafter Brackets.