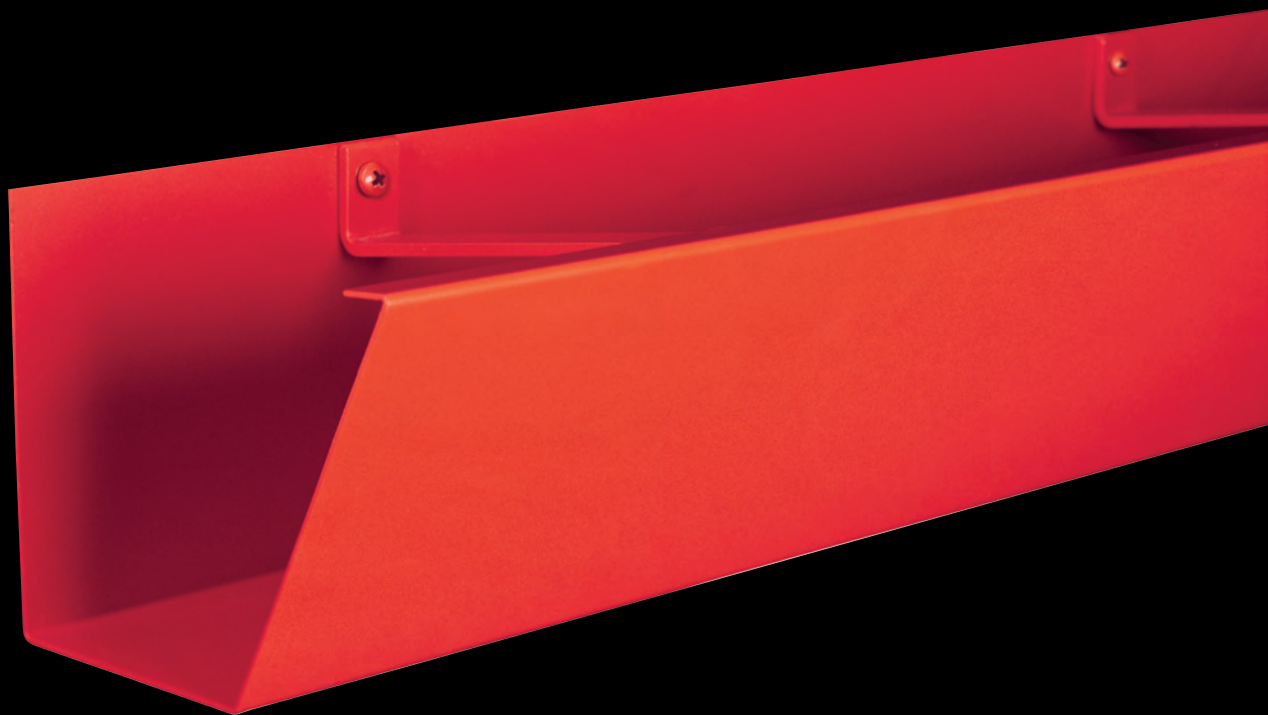
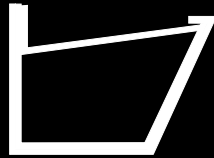


GUTTERCREST

Raked Box Gutter System

An alternative to box gutters, the raked face gives a striking impression to the eaves of the building. We have suggested sizes but can be manufactured as required.

Wide Range of sizes available

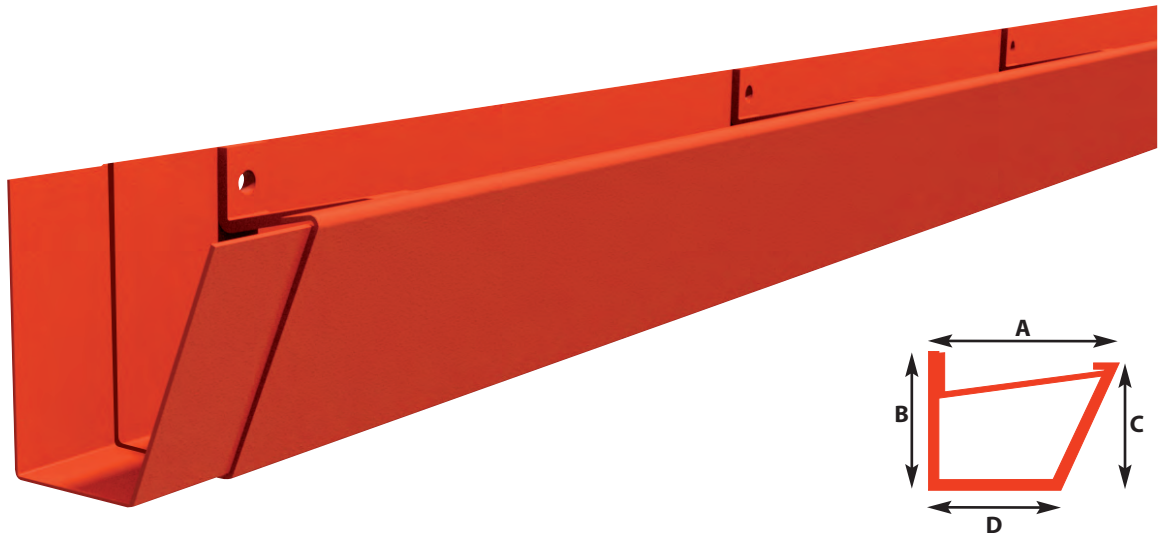


RAKED BOX GUTTER SYSTEM

STANDARD GUTTER LENGTHS

GUTTER (mm)	3m	1.5m	A (mm)	B (mm)	C (mm)	D (mm)	MATERIAL THICKNESS
100 x 75	RBX1/1	RBX1/2	100	85	75	60	2
100 x 100	RBX2/1	RBX2/2	100	110	100	60	2
125 x 100	RBX3/1	RBX3/2	125	110	100	75	2
150 x 100	RBX4/1	RBX4/2	150	110	100	90	2
150 x 150	RBX5/1	RBX5/2	150	160	150	90	2
200 x 150	RBX6/1	RBX6/2	200	160	150	120	2
200 x 200	RBX7/1	RBX7/2	200	210	200	120	2
300 x 200	RBX8/1	RBX8/2	300	210	200	180	2

Wider or deeper gutters manufactured to size required.



STOPEND

GUTTER (mm)	R/H STOPEND	L/H STOPEND
100 x 75	RBX1/10	RBX1/11
100 x 100	RBX2/10	RBX2/11
125 x 100	RBX3/10	RBX3/11
150 x 100	RBX4/10	RBX4/11
150 x 150	RBX5/10	RBX5/11
200 x 150	RBX6/10	RBX6/11
200 x 200	RBX7/10	RBX7/11
300 x 200	RBX8/10	RBX8/11



RAKED BOX GUTTER SYSTEM

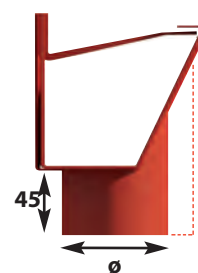
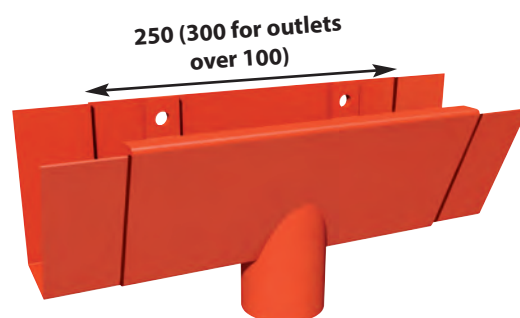
OUTLETS

ROUND

GUTTER (mm)	63 Ø	75 Ø	100 Ø	125 Ø	150 Ø
100 x 75	RBX1/13	RBX1/14	-	-	-
100 x 100	RBX2/13	RBX2/14	-	-	-
125 x 100	RBX3/13*	RBX3/14	RBX3/15	-	-
150 x 100	RBX4/13*	RBX4/14*	RBX4/15	RBX4/16	-
150 x 150	RBX5/13*	RBX5/14*	RBX5/15	RBX5/16	-
200 x 150	RBX6/13*	RBX6/14*	RBX6/15*	RBX6/16	RBX6/17
200 x 200	RBX7/13*	RBX7/14*	RBX7/15*	RBX7/16	RBX7/17
300 x 200	RBX8/13*	RBX8/14*	RBX8/15*	RBX8/16*	RBX8/17*

SQUARE AND RECTANGULAR

GUTTER (mm)	75 x 50	75 x 75	100 x 75	100 x 100	150 x 100	150 x 150
100 x 75	RBX1/18	RBX1/19	RBX1/20	-	-	-
100 x 100	RBX2/18	RBX2/19	RBX2/20	-	-	-
125 x 100	RBX3/18*	RBX3/19	RBX3/20	RBX3/21	RBX3/22	-
150 x 100	RBX4/18*	RBX4/19*	RBX4/20*	RBX4/21	RBX4/22	-
150 x 150	RBX5/18*	RBX5/19*	RBX5/20*	RBX5/21	RBX5/22	-
200 x 150	RBX6/18*	RBX6/19*	RBX6/20*	RBX6/21	RBX6/22	RBX6/23
200 x 200	RBX7/18*	RBX7/19*	RBX7/20*	RBX7/21	RBX7/22	RBX7/23
300 x 200	RBX8/18*	RBX8/19*	RBX8/20*	RBX8/21*	RBX8/22*	RBX8/23*



* Indicates a sleeve outlet can be used in place of running outlets giving increased flexibility and cost efficiency.



ANGLES - INTERNAL AND EXTERNAL

90° EXTERNAL

GUTTER (mm)	A (mm)	B (mm)
100 x 75	250	150
100 x 100	250	150
125 x 100	275	150
150 x 100	300	150
150 x 150	300	150
200 x 150	350	150
200 x 200	350	150
300 x 200	450	150

90° INTERNAL

A (mm)	B (mm)
150	250
150	250
150	275
150	300
150	300
150	350
150	350
150	450

135° EXTERNAL

A (mm)	B (mm)
190	150
190	150
200	150
210	150
210	150
230	150
230	150
270	150

135° INTERNAL

A (mm)	B (mm)
150	190
150	190
150	200
150	210
150	210
150	230
150	230
150	270

IRREGULAR ANGLE

GUTTER (mm)	EXTERNAL	INTERNAL
100 x 75	RBX1/7	RBX1/8
100 x 100	RBX2/7	RBX2/8
125 x 100	RBX3/7	RBX3/8
150 x 100	RBX4/7	RBX4/8
150 x 150	RBX5/7	RBX5/8
200 x 150	RBX6/7	RBX6/8
200 x 200	RBX7/7	RBX7/8
300 x 200	RBX8/7	RBX8/8

When ordering an irregular angle, state ref no. and actual fascia angle & note that A+B lengths vary subject to angle.

