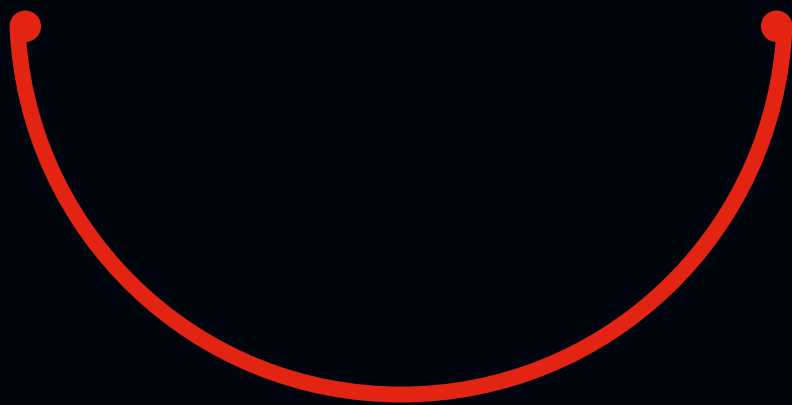


GUTTERCREST

ALUMINIUM

HALF ROUND GUTTERS



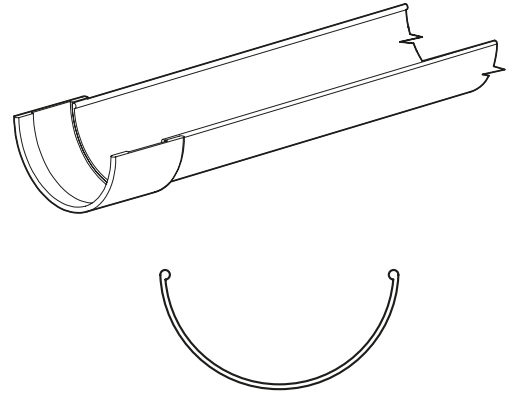
PRICE LIST

PRICE LIST

HALF ROUND GUTTER SYSTEM

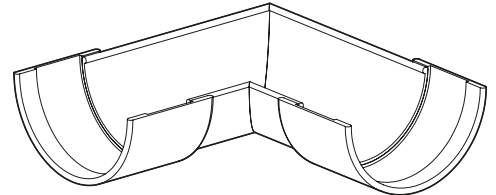
STANDARD GUTTER LENGTHS

Gutter (mm)	100	115	130	150	200
3.0mtr	HR1/1	HR2/1	HR3/1	HR4/1	HR5/1
MILL	30.77	35.07	39.44	53.14	90.03
PPC	37.97	43.33	48.76	63.86	97.77
1.8mtr	HR1/2	HR2/2	HR3/2	HR4/2	HR5/2
MILL	20.39	23.15	25.99	34.74	-
PPC	24.71	28.11	31.58	41.17	-



ANGLES - INTERNAL & EXTERNAL

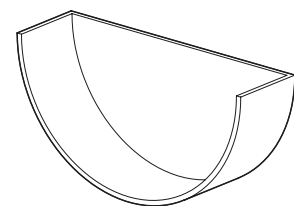
Gutter (mm)	100	115	130	150	200
90°	HR1/3	HR2/3	HR3/3	HR4/3	HR5/3
MILL	16.68	18.01	19.71	24.12	42.58
PPC	17.40	18.87	20.74	25.38	44.25
135°	HR1/5	HR2/5	HR3/5	HR4/5	HR5/5
MILL	16.68	18.01	19.71	24.12	42.58
PPC	17.40	18.87	20.74	25.38	44.25
Irregular	HR1/7	HR2/7	HR3/7	HR4/7	HR5/7
MILL	26.13	27.77	29.75	35.06	54.06
PPC	26.84	28.67	30.86	36.47	55.97



STOP ENDS

Gutter (mm)	100	115	130	150	200
Stop End	HR1/9	HR2/9	HR3/9	HR4/9	HR5/9
MILL	5.99	6.24	6.49	6.75	25.98
PPC	6.54	6.79	7.04	7.30	26.59

NOTE: THESE ARE EXTERNAL STOP ENDS

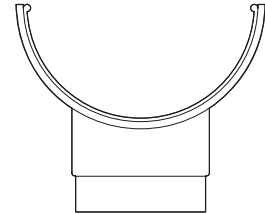
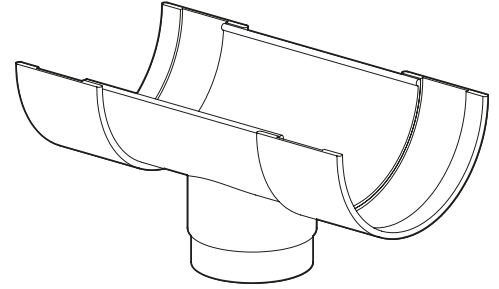


PRICE LIST

HALF ROUND GUTTER SYSTEM

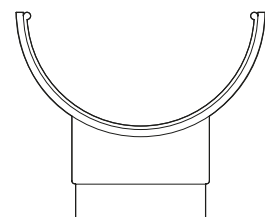
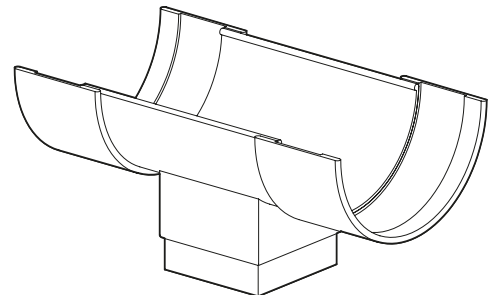
RUNNING OUTLETS - ROUND

Gutter (mm)	100	115	130	150	200
63mm Ø	HR1/13	HR2/13	HR3/13	HR4/13	HR5/13
MILL	24.00	25.69	26.76	29.42	45.28
PPC	24.60	26.38	27.54	30.32	46.96
75mm Ø	HR1/14	HR2/14	HR3/14	HR4/14	HR5/14
MILL	25.02	26.71	27.79	30.43	46.30
PPC	25.62	27.40	28.57	31.33	47.98
100mm Ø	HR1/15	HR2/15	HR3/15	HR4/15	HR5/15
MILL	-	29.33	30.41	33.06	48.92
PPC	-	30.02	31.19	33.96	50.60
125mm Ø	HR1/16	HR2/16	HR3/16	HR4/16	HR5/16
MILL	-	-	-	36.30	52.25
PPC	-	-	-	37.08	53.93
150mm Ø	HR1/17	HR2/17	HR3/17	HR4/17	HR5/17
MILL	-	-	-	-	54.59
PPC	-	-	-	-	56.27



RUNNING OUTLETS - SQUARE & RECTANGULAR

Gutter (mm)	100	115	130	150	200
75 x 50mm	HR1/18	HR2/18	HR3/18	HR4/18	HR5/18
MILL	26.10	27.03	28.12	30.76	46.63
PPC	26.70	27.72	28.90	31.66	48.31
75 x 75mm	HR1/19	HR2/19	HR3/19	HR4/19	HR5/19
MILL	27.41	28.34	29.42	32.06	47.93
PPC	28.01	29.03	30.20	32.96	49.61
100 x 75mm	HR1/20	HR2/20	HR3/20	HR4/20	HR5/20
MILL	28.98	29.91	30.99	33.64	49.50
PPC	29.58	30.60	31.77	34.54	51.18
100 x 100mm	HR1/21	HR2/21	HR3/21	HR4/21	HR5/21
MILL	-	31.78	32.87	35.51	51.39
PPC	-	32.47	33.65	36.41	53.07
150 x 100mm	HR1/22	HR2/22	HR3/22	HR4/22	HR5/22
MILL	-	36.31	37.48	39.20	55.15
PPC	-	38.15	39.57	39.98	56.83

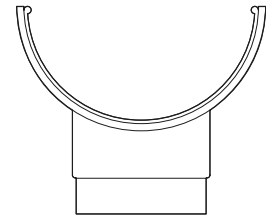
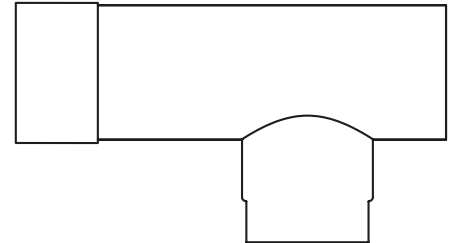


PRICE LIST

HALF ROUND GUTTER SYSTEM

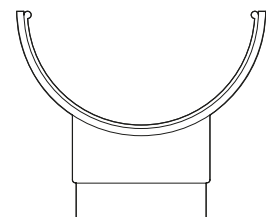
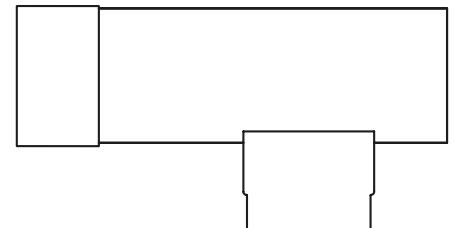
STOPEND OUTLETS - ROUND

Gutter (mm)	100	115	130	150	200
63mm Ø	HR1/130	HR2/130	HR3/130	HR4/130	HR5/130
MILL	27.46	29.18	30.27	33.00	-
PPC	28.01	29.73	30.83	33.65	-
75mm Ø	HR1/140	HR2/140	HR3/140	HR4/140	HR5/140
MILL	28.48	30.20	31.30	33.98	-
PPC	29.03	30.75	31.86	34.54	-
100mm Ø	HR1/150	HR2/150	HR3/150	HR4/150	HR5/150
MILL	-	32.82	33.91	36.60	-
PPC	-	33.37	34.47	37.16	-
125mm Ø	HR1/160	HR2/160	HR3/160	HR4/160	HR5/160
MILL	-	-	-	40.06	-
PPC	-	-	-	40.84	-



STOPEND OUTLETS - SQUARE & RECTANGULAR

Gutter (mm)	100	115	130	150	200
75 x 50mm	HR1/180	HR2/180	HR3/180	HR4/180	HR5/180
MILL	29.56	30.53	31.63	34.35	-
PPC	30.11	31.08	32.19	35.00	-
75 x 75mm	HR1/190	HR2/190	HR3/190	HR4/190	HR5/190
MILL	30.86	31.83	32.92	35.65	-
PPC	31.41	32.38	33.48	36.30	-
100 x 75mm	HR1/200	HR2/200	HR3/200	HR4/200	HR5/200
MILL	32.44	33.40	34.49	37.23	-
PPC	32.99	33.95	35.05	37.88	-
100 x 100mm	HR1/210	HR2/210	HR3/210	HR4/210	HR5/210
MILL	-	35.28	36.38	39.05	-
PPC	-	35.83	36.94	39.61	-
150 x 100mm	HR1/220	HR2/220	HR3/220	HR4/220	HR5/220
MILL	-	36.42	41.14	42.96	-
PPC	-	37.02	43.23	43.74	-

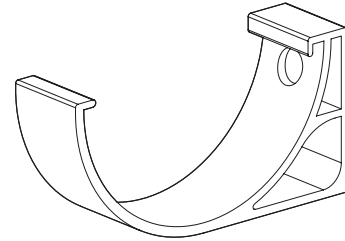


PRICE LIST

HALF ROUND GUTTER SYSTEM

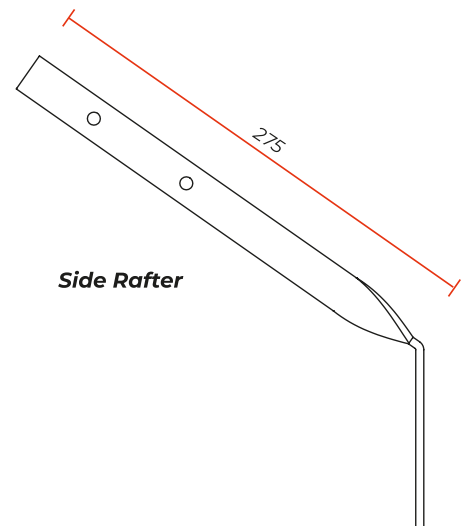
FASCIA BRACKETS

Gutter (mm)	100	115	130	150	200
Bracket	HR1/28	HR2/28	HR3/28	HR4/28	HR5/28
MILL	3.05	3.68	3.94	4.45	8.09
PPC	3.60	4.23	4.49	5.00	8.64

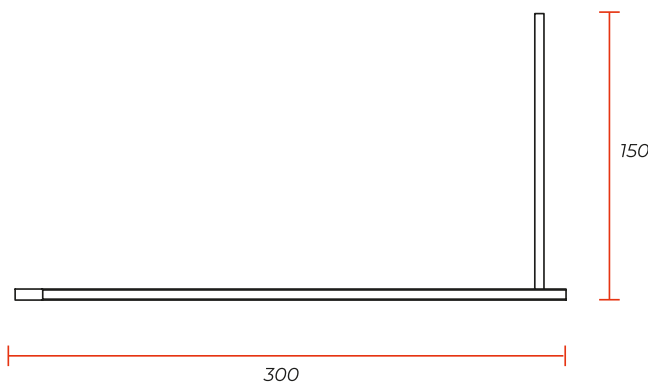


RAFTER & MORTAR BRACKETS

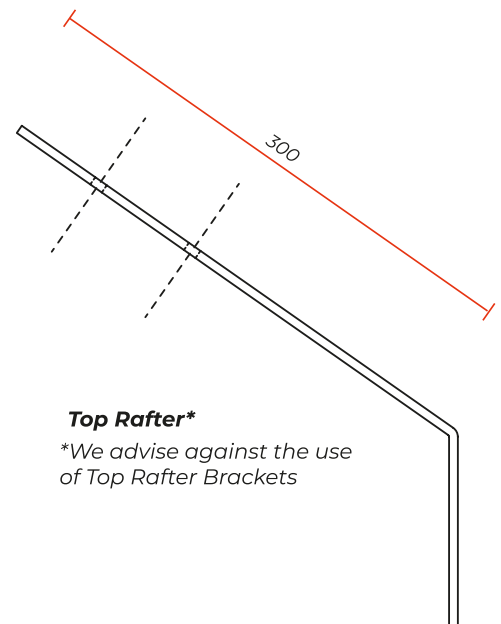
Gutter (mm)	100	115	130	150
Side Rafter	HR1/29	HR2/29	HR3/29	HR4/29
MILL	9.48	9.48	9.48	9.48
PPC	10.03	10.03	10.03	10.03
Top Rafter	HR1/30	HR2/30	HR3/30	HR4/30
MILL	8.23	8.23	8.23	8.23
PPC	8.78	8.78	8.78	8.78
Mortar	HR1/31	HR2/31	HR3/31	HR4/31
MILL	10.35	10.35	10.35	10.35
PPC	10.90	10.90	10.90	10.90



Side Rafter



Standard Mortar Bracket



Top Rafter*

*We advise against the use of Top Rafter Brackets

PRICE LIST

FIXINGS & SEALANTS

Code	Qty	Description	Price
GM1	25	Gutter Fixing 38 x 5.5 A2 Stainless Steel	4.56
GM2	100	Gutter Fixing 38 x 5.5 A2 Stainless Steel	13.86
GM3	200	Gutter Fixing 38 x 5.5 A2 Stainless Steel	26.90



GM1 - GM5

Code	Qty	Description	Price
GM201	25	4.8 x 14.7 All Aluminium sealed Rivet	3.38
GM202	100	4.8 x 14.7 All Aluminium sealed Rivet	12.46
GM203	200	4.8 x 14.7 All Aluminium sealed Rivet	23.38



GM201 - GM203

Code	Qty	Description	Price
GM610	25	6.3mm STRUCTURAL Aluminium Rivet	10.97
GM620	100	6.3mm STRUCTURAL Aluminium Rivet	39.11
GM630	200	6.3mm STRUCTURAL Aluminium Rivet	78.21



GM610 - GM620

Code	Qty	Description	Price
GM20	25	Downpipe Fixing 6 x 50 A2 Stainless Steel	9.81
GM21	100	Downpipe Fixing 6 x 50 A2 Stainless Steel	32.84



GM20 - GM21

Code	Qty	Description	Price
GM30	1	380ml Cartridge Silicone Sealant - Grey	11.00
GM32	1	1no 12mtr Reel Butyl Tape 12mm x 3mm	6.56
GM40	1	Touch Up Paint - Colour to match order	23.98
GM50	1	1no Drill Bit 4.8mm	2.06
GM51	1	1no Drill Bit 6.4mm	2.74



GM30



GM32



GM50 - GM60

Code	Qty	Description	Price
GM910	1	Standard Rainwater Rivet Gun	20.13
GM920	1	Professional Rivet Gun - Interchangeable collets for rain-water and structural rivets	115.19



GM910



GM920

PRICE LIST

CARRIAGE CHARGES

GUTTERS, DOWNPIPES & HOPPERS

TOTAL NET ORDER VALUE (EXCLUDING VAT)		PRICE
£0 - £99	BOXED UP TO 10KG	£15 Min Charge
£0 - £99	3M LENGTHS UP TO 10KGS	£30
£100 - £624		£40
£625 - £1249		£55
£1250 PLUS		FREE DELIVERY

Delivery Exclusions Apply:
Please see the Charges
section below

COPING, FASCIAS & SOFFITS

TOTAL NET ORDER VALUE (EXCLUDING VAT)	PRICE
£0 - £150	£40
£151 - £1249	£95
£1250 PLUS	FREE DELIVERY

Delivery Exclusions Apply:
Please see the Charges
section below

CHARGES

With a fleet of Guttercrest vehicles and outside couriers, we deliver all our aluminium products to your local builders merchant or direct to site.

SCOTTISH MAINLAND

Standard carriage charges apply on
Postcode areas: DG, EH, G, KA, KY, TD

ALSO TO INCLUDE: DD1 - DD7, FK1 - FK7, FK9 - FK15,
FK8 STERLING ONLY (Rest of FK8 will be price on application),
KY1 - KY16, PA1 - PA19, PH1 - PH4, PH12 - PH14

All other Scottish Mainland, carriage price on application.

NON MAINLAND

For delivery to Northern Ireland, The Republic of Ireland
and all offshore Islands, carriage Price on application.

EXPORT

Price on application.

Tel: +44 (0)1691 663300

Email: info@guttercrest.co.uk

VAT will be charged at the appropriate rate.

